



no boundaries



# 03 MUSTANG

MACH I

CONVERTIBLE

GT

INTERIOR

AUDIO

MODELS/SPECS

COLORS/  
WHEELS/  
ENGINES



Mach 1 in Azure Blue driven by a professional driver on a closed course.



See, if you pray hard enough and are really bad, history does repeat itself. Introducing Mustang Mach I. Now go forth and shaketh things up.

mach 1

NO NEED TO PINCH YOURSELF. MACH I IS INDEED BACK! 305 HORSES. THE LEGENDARY "SHAKER" HOOD DESIGN. SPECIAL INTERIOR. ALL DESIGNED TO QUICKLY TRANSPORT YOU DIRECTLY INTO NIGHTS FILLED WITH 5-SPEED STICKS, AWESOME POWER AND CHURNING TIRES.

- 1 The new Mustang Mach I has a unique gauge cluster specifically designed for the ultimate high-performance enthusiast. Easy to read. Great looking.
- 2 4.6L DOHC 305 hp V8. Multi-port Fuel Injection, of course. And more than enough low-end torque to overcome the stranglehold the asphalt has on your 17" wheels styled after the originals.
- 3 Pop the hood and let the world take a gander at the one-of-a-kind "shaker" hood. And after they stop talkin' about how cool it is... focus their attention on the low rumble only a massive V8 can create.



Mustang Deluxe Convertible with Pony Package and optional equipment in Silver Metallic.



## “Thinking of owning the road? Time to “pony up.”

### MUSTANG CONVERTIBLE

THE NIGHT IS WARM. AND THE ROAD IS SHOUTING “COME OUT AND PLAY.” WHAT ON EARTH COULD BE MORE EXHILARATING THAN TO DROP THE TOP ON YOUR NEW MUSTANG CONVERTIBLE AND LET THE PONIES RUN AROUND FOR AWHILE? ONE WAY TO IMPROVE UPON THIS MOMENT IS TO OPT FOR THE V6 “PONY” EXTERIOR PACKAGE. BELOW ARE THE GREAT-LOOKING DETAILS. AH... THOSE SUMMER NIGHTS WITH NO PARTICULAR PLACE TO GO. CAN YOU IMAGINE?

1 See that familiar figure running wild down the side in the photo above? This unique “Mustang Stampede” tape stripe is exclusive to the “Pony.” And so are the 16” polished wheels that shine so brightly in the photo to the right.

2 We have taken our performance hood with its dramatic scoop and mounted it on top of your “Pony” V6. And now we would like to direct your attention to the Pony featured in our big photograph. Notice the black letters on the back? That is also unique. We thought we would make it stand out better so all those people following you would know exactly what just blew past them.



Mustang GT Premium Coupe in Torch Red.



“Don’t ya just love the smell of burning rubber in the morning?”

MUSTANG  
GT

DOES YOUR HEART BEGIN TO BEAT A LOT HARDER WHEN YOU HEAR THE SOUND OF A V8? THEN YOU ARE ONE OF US. AND MUSTANG GT IS YOUR KIND OF MACHINE. 260 HORSES (OR IN OUR CASE, PONIES). 9.4 HIGH COMPRESSION. 3.27:1 AXLE RATIO TO HELP MOVE YOU FROM THE LAUNCH PAD OTHERS FONDLY CALL A STOPLIGHT. AVAILABLE IN HARD OR SOFT TOP.

<sup>1</sup> Naturally, Mustang GT’s 17” performance tires would be bolted to a performance wheel. You have the choice of three. Either this optional 5-spoke 17” wheel forged from bright aluminum alloy, or the very dramatic GT Premium wheel displayed in the action photo above. All three, including the GT Standard Deluxe, are shown in the Wheels section so you can compare them “mano a mano.”

<sup>2</sup> Bright polished stainless steel exhaust tips? You bet.



Mach 1 in Midnight Black. Shown with optional Interior Upgrade Package.

## You'll find a few holes in our interior thinking.

# INTERIOR

EVERYONE KNOWS THE IMPORTANCE OF A GREAT INTERIOR DESIGN. OURS IS PERFORMANCE DRIVEN. INSTRUMENTS THAT ARE DESIGNED TO BE INSTANTLY READ. SEATS THAT HELP SUPPORT YOU IN THE TURNS. NO CUTESY STUFF HERE. SHOWN ABOVE IN DARK CHARCOAL IS OUR GT DELUXE. AND ABOVE IS THE OUTRAGEOUS MACH 1. SPECIAL LOOK. SPECIAL INSTRUMENTATION. SPECIAL STAINLESS STEEL ACCENTS ON THE GEAR SHIFT AND CONTROL SURROUND. IT'S DIFFERENT. IT'S SPECIAL. IT'S MACH 1.

1 It's all in the details. Order your Mustang V6 manual with the Interior Upgrade Package and you'll get the shift knob wrapped in leather along with an aluminum shift boot bezel.

2 Also as part of the Interior Upgrade Package with the manual transmission, stainless steel racing-inspired portal pedals await your commands.





# AUDIO

“Speak up, I can’t hear you officer.”

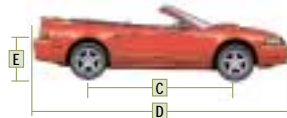
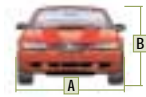
WELL, WELL, WELL. WE’VE COME TO WHERE THE MUSIC COMES ALIVE. IT’S A SHAME WE COULDN’T PRINT THESE PHOTOS ON THAT NEW “SOUND-O-MATIC” PAPER THAT’LL LET YOU HEAR EXACTLY HOW TRULY UNBELIEVABLE THESE SOUND SYSTEMS ARE JUST BY TURNING THE PAGE. SORRY. SO, YOUR BEST BET IS TO VISIT YOUR FORD DEALER AND CRANK ‘EM UP TO THE 9 OR 10 POSITION. TRUST US. YOU’VE PROBABLY NEVER EXPERIENCED ANYTHING LIKE THEM.

**1** MACH® 1000. It features a 60-watt amp powering four mid-range tweeters. Six 85-watt sub-woofer amps drive four interior sub-woofers. Altogether, 1140 watts of bone-jarring peak power. A pair of specially designed 10" trunk-mounted sub-woofers try to hold it all in. Good luck. Oops, almost forgot... this option comes with an in-dash 6-disc CD player with speed-sensitive volume control. It is one hellava sound system.

**2** Next, we would like to point your ears in the direction of our optional MACH CD/MP3 player. The latest in car-tune technology, the MP3 player is a sound machine that can store up to 255 songs and play up to 10 hours of non-stop music all from a single CD download.

**3** The available MACH 460 with its in-dash 6-disc CD player.

## SPECIFICATIONS



Exterior	Coupe/Convertible
A. Overall width	73.1"
B. Height	53.1"/53.2"
C. Wheelbase	101.3"
D. Overall length	183.2"
E. Liftover height	28.2"/28.1"
<b>Interior</b>	
<b>1st row</b>	
Head room	38.1"/38.0"
Shoulder room	53.6"
Hip room	52.3"
Leg room – Automatic	42.6"
Leg room – Manual	41.9"
<b>2nd row</b>	
Head room	35.5"/35.8"
Shoulder room	52.1"/41.4"
Hip room	47.4"/41.0"
Leg room	29.9"
<b>Cargo (cu. ft.)</b>	
Trunk volume	10.9/7.7

## STANDARD FEATURES

### Safety/Security

Airbags* – Driver and right-front passenger 2nd Generation
Belt-Minder™ safety belt reminder
Brake/shift interlock
Bumpers – 5-mph energy-absorbing
Door ajar alert chime
Emergency manual trunk release – Glow-in-the-dark handle unlocks decklid from inside trunk
Fuel pump inertia shutoff switch
Headlamps-on alert chime
Illuminated entry system
Key-in-ignition alert chime
Low fuel warning light
Rear seat child safety seat top tether anchors
Remote keyless entry system – With panic button and 2 key fobs
Safety belts – 3-point in all seating positions
*Safety cell** unitized body construction
SecuriLock™ – Passive anti-theft system
Side intrusion door beams

### Mechanical

4-wheel disc brakes
100,000-mile tune-up interval**
Aluminum wheels
Battery saver
Fuel tank – 15.7-gallon capacity
Gas-pressurized shock absorbers – Front and rear
Hydraulic decklid assist struts
Lightweight composite hood with scoop
Maintenance-free battery
Power rack-and-pinion steering
Power-retractable convertible top with semi-hard boot (Convertible models only)
Rear-wheel drive
Spare – Compact
Stabilizer bar – Front
Stainless steel exhaust system
Suspension – Front: independent modified MacPherson strut with separate spring on lower arm and stabilizer bar; rear: 4-bar link with coil springs on lower arm and stabilizer bar

### Seating

2-way head restraints
Split-folding rear seat backs (Coupe only)

### Interior

Air conditioning
Center console – Full-length with armrest, storage bin, tissue holder, dual cupholders and parking brake handle
Cupholders – 2 front
Driver's footrest
Front door map pockets
Glove compartment with lock
Luggage compartment trim and carpet
Power door locks
Power points – 2
Power windows – With one-touch-down driver's side feature (also features power quarter windows on Convertible models)
Remote decklid release – In glove compartment
Storage net between visors on headliner (Coupe only)
Tachometer
Tilt steering wheel
Trip odometer
Visor vanity mirrors

### Exterior

Bodyside moldings – Color-keyed
Bumpers – Body-colored
Headlamps – Complex reflector halogen
Power outside mirrors
Rear defroster
Solar tinted glass
Windshield wipers – Variable intermittent

\*Always wear your safety belt and secure children in the rear seat.  
 \*\*Under normal driving conditions with regular fluid and filter changes.

Competitive comparisons based on publicly available information and Ford certification data at time of printing. Some features discussed may be optional. Vehicles shown may contain optional equipment. Features shown may be offered only in combination with other options or subject to additional ordering requirements or limitations. Following publication of the catalog, certain changes in standard equipment, options and the like, or product delays, may have occurred which would not be included in these pages. Your Ford Dealer is the best source for up-to-date information. Ford Division reserves the right to change product specifications at any time without incurring obligations.

SPECIFICATIONS

MODEL-SPECIFIC FEATURES/OPTIONS

Mustang Standard Coupe		Mustang Deluxe Coupe & Convertible		Mustang Premium Coupe & Convertible	
<b>Safety/Security</b>					
—	<input type="checkbox"/>	■	■	4-wheel anti-lock braking system (ABS)	
—	<input type="checkbox"/>	■	■	Traction Control	
<b>Mechanical</b>					
■	■	■	■	3.8L OHV 12-valve V6 engine	
■	■	■	■	5-speed manual overdrive transmission* (not available on Premium Convertible)	
—	<input type="checkbox"/>	■	■	4-speed automatic transmission with overdrive lockout (standard on Premium Convertible)	
■	■	■	■	16" painted aluminum wheels (standard on Deluxe Coupe)	
—	<input type="checkbox"/>	■	■	16" bright machined-aluminum wheels (standard on Deluxe Convertible)	
—	<input type="checkbox"/>	■	■	16" polished aluminum wheels (Pony Package)	
■	■	■	■	P225/55R16 all-season BSW tires	
■	■	■	■	Spare – 15" compact	
<b>Seating</b>					
■	■	■	■	Cloth seating surfaces	
■	■	■	■	Front reclining bucket seats	
—	<input type="checkbox"/>	■	■	Leather seating surfaces (standard on Premium Convertible)	
—	■	■	■	Power driver's seat – 6-way	
<b>Interior</b>					
■	■	■	■	AM/FM stereo with single CD player and digital clock	
—	<input type="checkbox"/>	■	■	AM/FM stereo with single CD and MP3 player	
—	<input type="checkbox"/>	■	■	MACH® 460 AM/FM stereo with in-dash 6-disc CD player	
—	■	■	■	MACH 1000 AM/FM stereo with in-dash 6-disc CD player	
—	■	■	■	Floor mats – Front	
—	<input type="checkbox"/>	■	■	Interior Upgrade Package – Includes aluminum-finish door lock posts, grey metallic finish on center panel and shifter bezel, leather-wrapped shift knob and aluminum shift boot trim ring (manual transmission only), and stainless steel footrest/pedals	
—	■	■	■	Leather-wrapped steering wheel (standard on Deluxe Convertible)	
—	■	■	■	Speed control	
<b>Exterior</b>					
—	<input type="checkbox"/>	■	■	Pony Package – Includes unique 16" polished aluminum wheels, unique Mustang Stampede tape stripes, unique rear fascia with Mustang in black lettering, GT hood and leather-wrapped steering wheel (not available with Sport Appearance Group)	
—	■	■	■	Rear spoiler (not available on Deluxe Convertible)	
—	<input type="checkbox"/>	■	■	Sport Appearance Group – Includes leather-wrapped steering wheel, 16" bright machined-aluminum wheels with P225/55R16 all-season BSW tires (not available with Pony Package or Deluxe Convertible)	

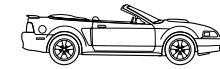
■ Standard    ■ Select Availability    □ Optional    — Not Available

Mustang GT Deluxe Coupe & Convertible		Mustang GT Premium Coupe & Convertible		Mustang Mach 1 Coupe	
<b>Safety/Security</b>					
■	■	■	■	4-wheel anti-lock braking system (ABS)	
■	■	■	■	Traction Control	
<b>Mechanical</b>					
■	■	■	■	4.6L SOHC 16-valve V8 engine	
—	■	■	■	4.6L DOHC 32-valve V8 engine	
■	■	■	■	5-speed manual overdrive transmission	
—	<input type="checkbox"/>	■	■	4-speed automatic transmission with overdrive lockout	
■	■	■	■	17" painted aluminum wheels	
—	■	■	■	17" premium painted aluminum wheels with bright flange	
—	<input type="checkbox"/>	■	■	17" 5-spoke bright aluminum wheels	
—	■	■	■	17" heritage aluminum wheels	
■	■	■	■	P245/45ZR17 performance BSW tires	
■	■	■	■	Limited slip rear axle – 3.27:1	
—	■	■	■	Limited slip rear axle – 3.55:1	
■	■	■	■	Quadra-shock rear suspension system	
■	■	■	■	Spare – 15" compact	
—	■	■	■	Spare – 17" compact	
■	■	■	■	Stabilizer bar – Front and rear	
■	■	■	■	Stainless steel dual exhaust system	
—	■	■	■	Stainless steel dual exhaust system with rolled tip	
<b>Seating</b>					
■	■	■	■	GT sport front bucket seats	
—	■	■	■	Mach 1 sport front bucket seats with comfort weave leather inserts	
■	■	■	■	Cloth seating surfaces	
—	■	■	■	Leather seating surfaces – Coupe	
—	■	■	■	Leather seating surfaces – Convertible	
■	■	■	■	Power driver's seat – 6-way	
<b>Interior</b>					
■	■	■	■	AM/FM stereo with single CD player and digital clock	
—	<input type="checkbox"/>	■	■	AM/FM stereo with single CD and MP3 capability	
—	<input type="checkbox"/>	■	■	MACH 460 AM/FM stereo with in-dash 6-disc CD player	
—	<input type="checkbox"/>	■	■	MACH 1000 AM/FM stereo with in-dash 6-disc CD player	
■	■	■	■	Floor mats – Front	
—	<input type="checkbox"/>	■	■	Interior Upgrade Package – Includes aluminum-finish door lock posts, grey metallic finish on center panel and shifter bezel, leather-wrapped shift knob and aluminum shift boot trim ring (manual transmission only), and stainless steel footrest/pedals (Mach 1 keeps aluminum shift knob)	
■	■	■	■	Leather-wrapped steering wheel	
■	■	■	■	Speed control	
—	■	■	■	Visor vanity mirrors – Illuminated (Convertible only)	
<b>Exterior</b>					
■	■	■	■	Fog lamps	
■	■	■	■	Rear spoiler	
—	■	■	■	Tape stripe – Hood and bodyside	

\*Standard on Mustang Premium Coupe only.



COUPE



CONVERTIBLE



PAINT AND TRIM COLORS

INTERIOR/EXTERIOR COMBINATIONS

				Oxford White
				Medium Parchment
				Medium Graphite
				Dark Charcoal
				Midnight Black
				<b>Coupe</b>
	■	■	■	Oxford White
			■	Zinc Yellow
	■	■	■	Torch Red
	■	■	■	Red Fire Metallic*
	■	■	■	Tropic Green Metallic
	■	■	■	Sonic Blue Metallic
	■	■	■	True Blue Metallic
		■	■	Silver Metallic*
	■	■	■	Dark Shadow Grey Metallic*
	■	■	■	Black
				<b>Convertible</b>
■	■		■	Oxford White
■			■	Zinc Yellow
	■	■	■	Torch Red
	■	■	■	Red Fire Metallic*
	■	■	■	Tropic Green Metallic
	■	■	■	Sonic Blue Metallic
	■	■	■	True Blue Metallic
■		■	■	Silver Metallic*
	■	■	■	Dark Shadow Grey Metallic*
	■	■	■	Black
				<b>GT</b>
■	■		■	Oxford White
■			■	Zinc Yellow
	■	■	■	Torch Red
■	■	■	■	Red Fire Metallic*
	■	■	■	Tropic Green Metallic
	■	■	■	Sonic Blue Metallic
	■	■	■	True Blue Metallic
■		■	■	Silver Metallic*
	■	■	■	Dark Shadow Grey Metallic*
	■	■	■	Black
				<b>Mach 1</b>
			■	Oxford White
			■	Zinc Yellow
			■	Torch Red
			■	Azure Blue*
			■	Dark Shadow Grey Metallic*
			■	Black

\*New for 2003 (Azure Blue is unique for Mach 1).



Oxford White



Zinc Yellow



Torch Red



Red Fire Metallic



Tropic Green Metallic



Azure Blue



Sonic Blue Metallic



True Blue Metallic



Silver Metallic



Dark Shadow Grey Metallic

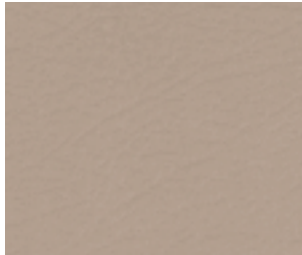


Black

Ford uses clearcoat paint for beauty and protection. Colors shown are representative only. See your dealer for actual paint/trim options.



Medium Parchment Cloth



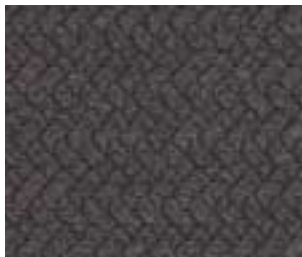
Medium Parchment Leather



Medium Graphite Cloth



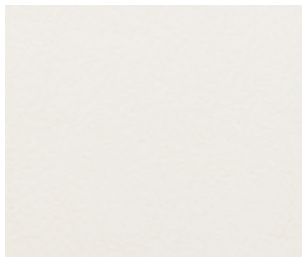
Medium Graphite Leather



Dark Charcoal Cloth



Dark Charcoal Leather



Oxford White Leather



Midnight Black Leather

## WHEELS/ENGINES



16" Painted Aluminum Wheel (Coupe only)  
Standard on Coupe and Deluxe Coupe



16" Bright Machined-Aluminum Wheel  
Standard on Deluxe Convertible and  
Premium Coupe



16" Polished Aluminum Wheel  
Available with Pony Package



17" Painted Aluminum Wheel  
Standard on GT Deluxe



17" Premium Painted Aluminum Wheel  
with Bright Flange  
Standard on GT Premium



17" Bright Aluminum Wheel  
Optional on GT Premium



17" Heritage Aluminum Wheel  
Standard on Mach 1



3.8L OHV 12-Valve V6

Horsepower: 193 hp @ 5500 rpm  
Torque: 225 lb.-ft. @ 2800 rpm



4.6L SOHC 16-Valve V8

Horsepower: 260 hp @ 5250 rpm  
Torque: 302 lb.-ft. @ 4000 rpm



4.6L DOHC 32-Valve V8

Horsepower: 305 hp @ 5800 rpm  
Torque: 320 lb.-ft. @ 4200 rpm